



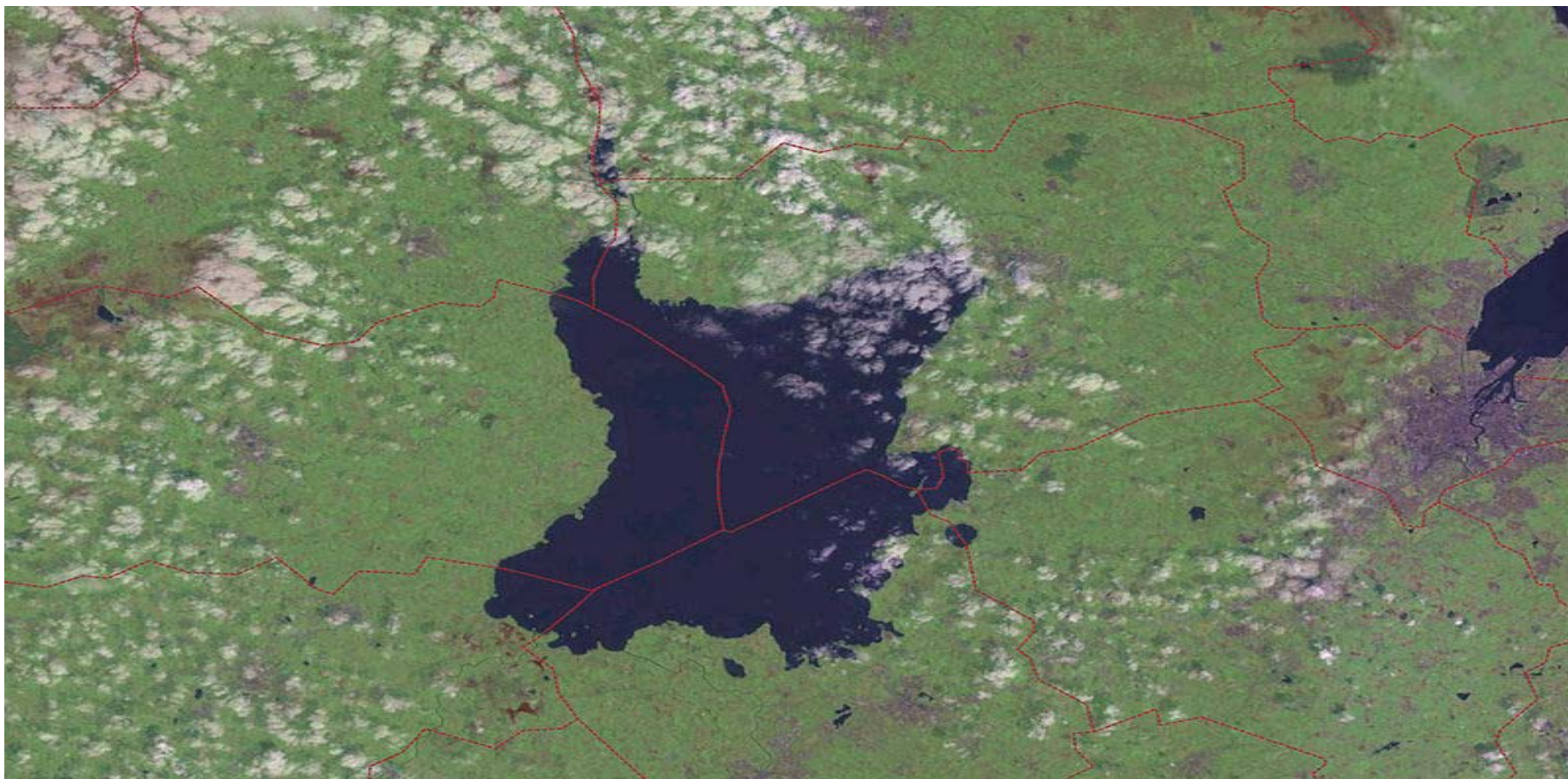
Comhshaoil, Pobal agus Rialtas Áitiúil
Environment, Community and Local Government



Comhshaol, Pobal agus Rialtas Áitiúil
Environment, Community and Local Government



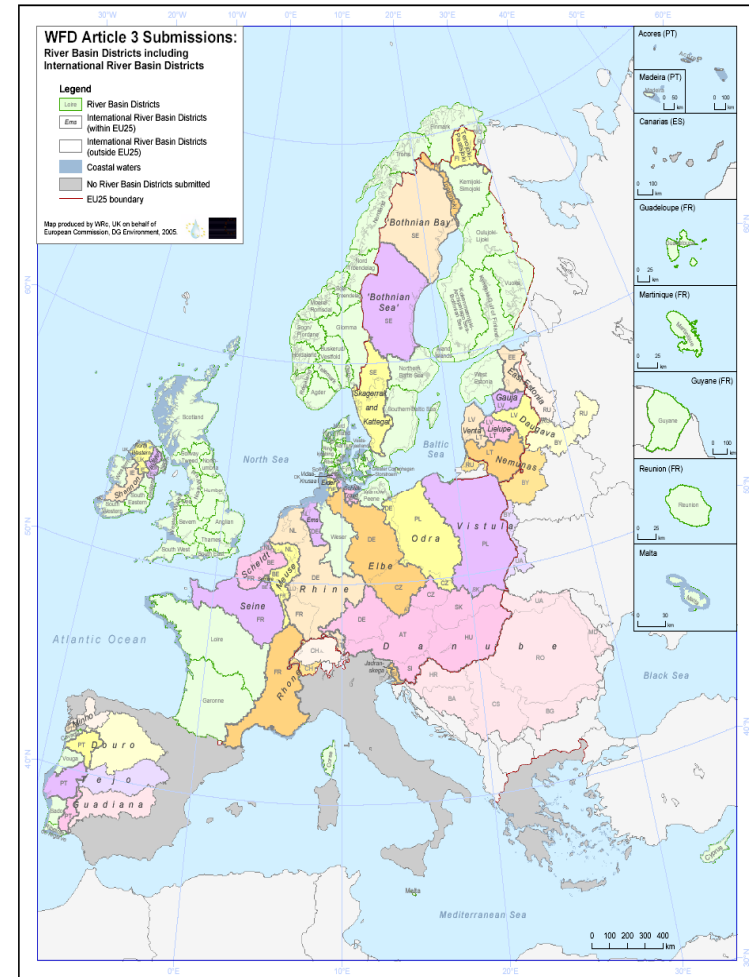
Comhshaol, Pobal agus Rialtas Áitiúil
Environment, Community and Local Government



Comhshaol, Pobal agus Rialtas Áitiúil
Environment, Community and Local Government

Water Framework Directive

- Directive adopted in 2000
- New approach to water protection
- Objectives:
 - Achieve good status by 2015 (provision for exemptions)
 - Maintain high status of waters where it exists
 - Prevent deterioration in water status
- River Basin Management Plans and Programmes of Measures in 6 year cycles



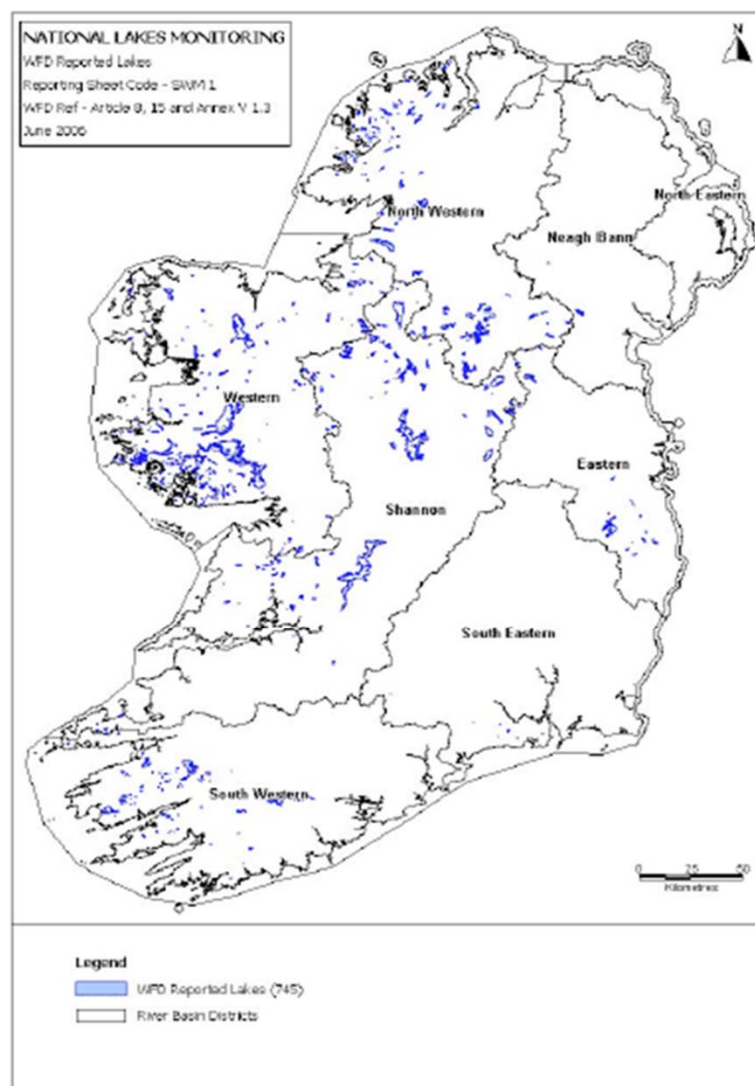


Figure 8.3 Irish Lakes reported under Article 5 of the Water Framework Directive.



Lake Types

Type	Small	Type	Large
1	Low alkalinity, shallow and small	2	Low alkalinity, shallow and large
3	Low alkalinity, deep and small	4	Low alkalinity, deep and large
5	Moderate alkalinity, shallow and small	6	Moderate alkalinity, shallow and large
7	Moderate alkalinity, deep and small	8	Moderate alkalinity, deep and large
9	High alkalinity, shallow and small	10	High alkalinity, shallow and large
11	High alkalinity, deep and small	12	High alkalinity, deep and large
13	Some lakes >300 m altitude		

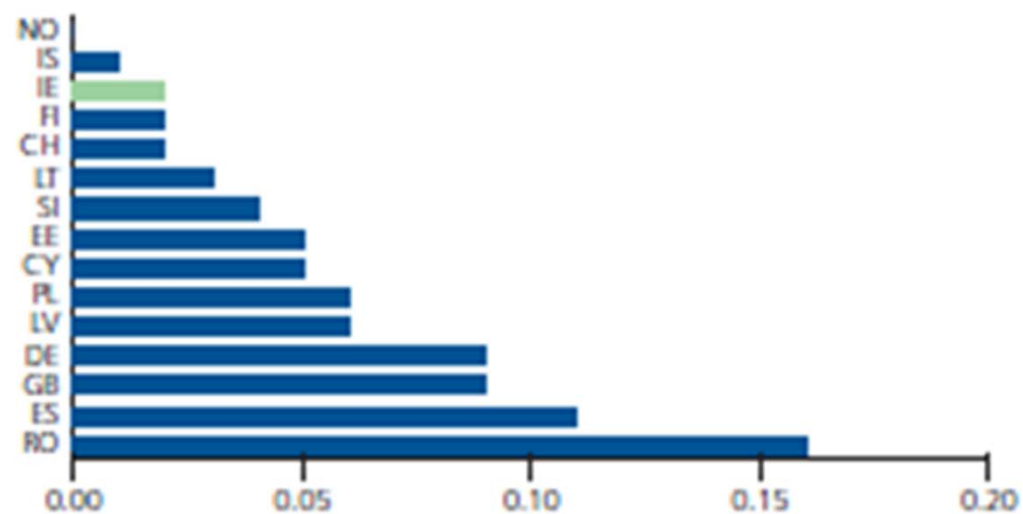


Lake Water Quality in Ireland

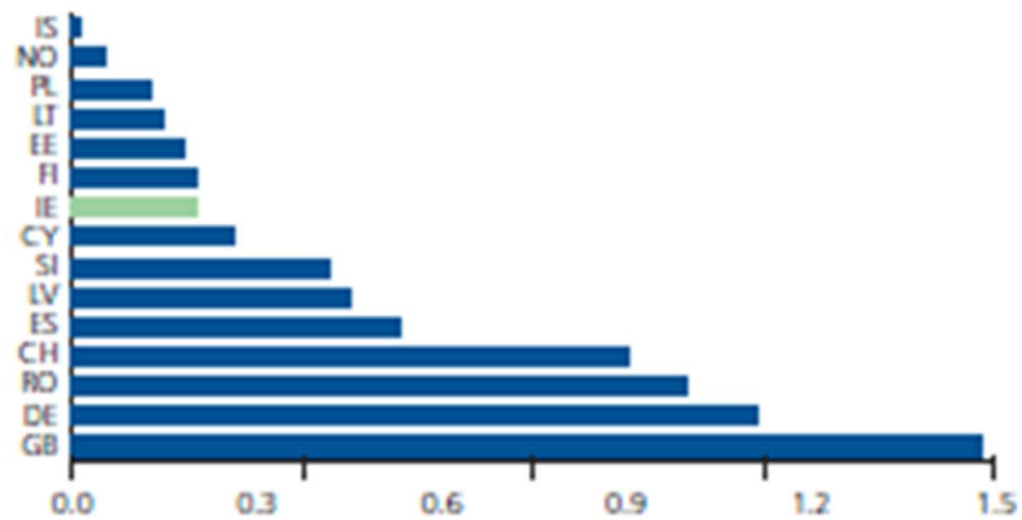
Ecological Status	Number of Lakes	% of Lakes	Surface Area (km ²)	% Area
High	16	7.7	22.1	2.3
Good	81	38.9	412.0	42.0
Moderate	69	33.2	282.3	28.8
Poor	37	17.8	257.2	26.2
Bad	5	2.4	7.4	0.8



Total Phosphorus (mg/l/P)



Nitrate (mg/l N)



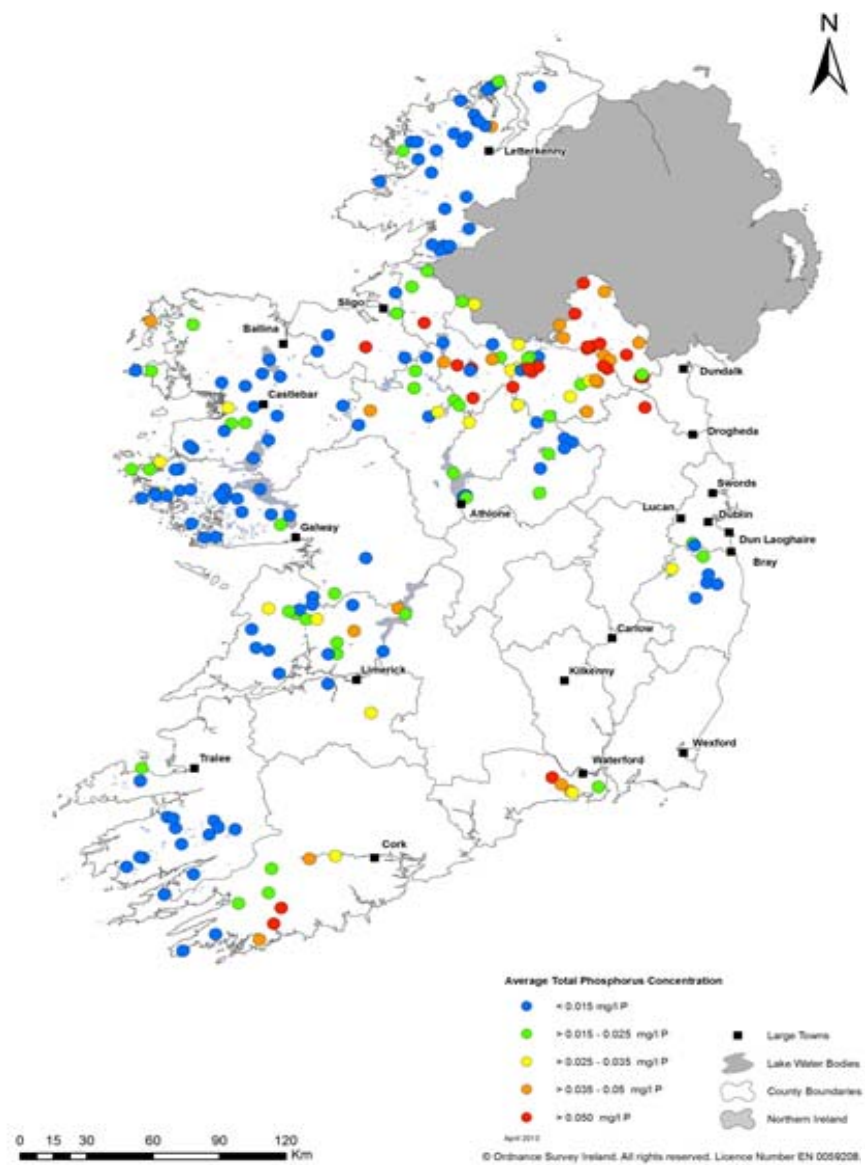


Figure 9: Average total phosphorus concentrations for lake waterbodies in 2012



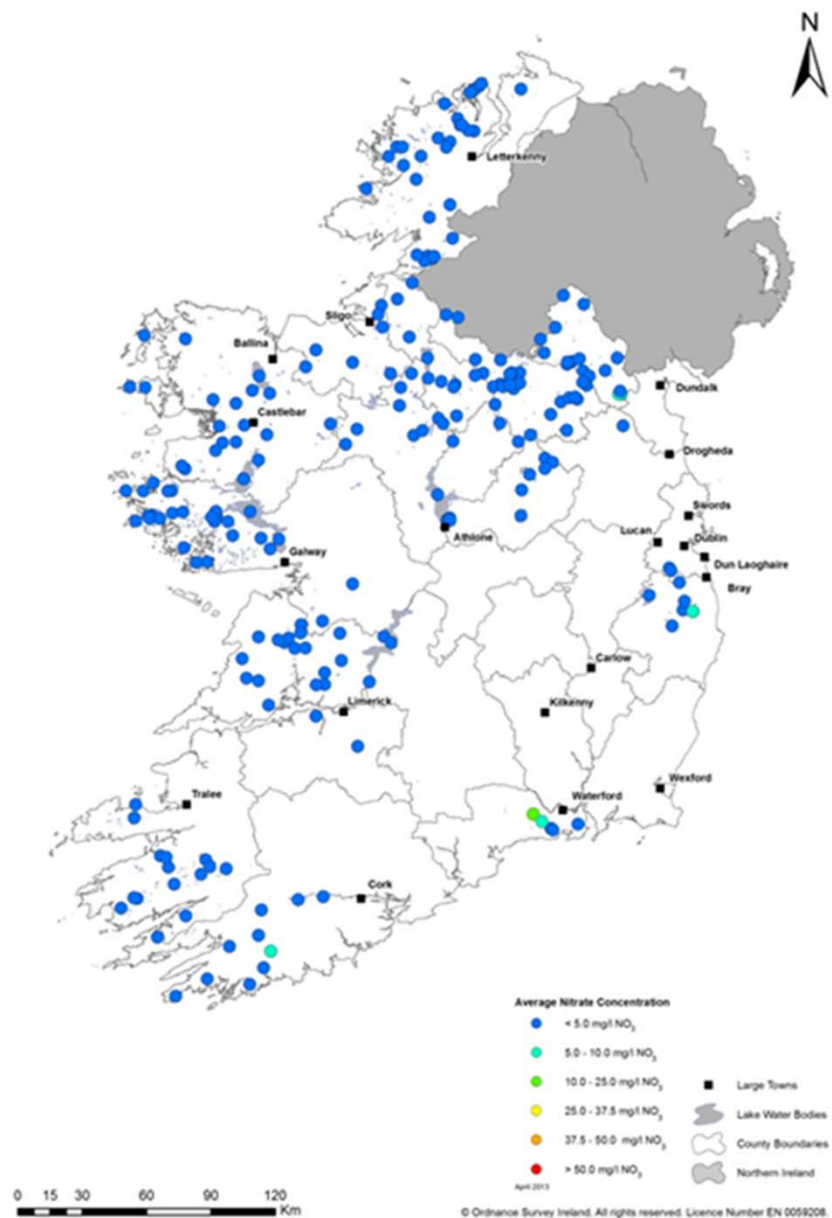


Figure 7: Average nitrate concentrations for lake waterbodies in 2012





Comhshaol, Pobal agus Rialtas Áitiúil
Environment, Community and Local Government