

# **The Broads**

## **An Overview of Lake and Catchment Management**

**Andrea Kelly**



**Broads**  
Authority

# The Broads National Park





Managed by drainage  
and peat digging

























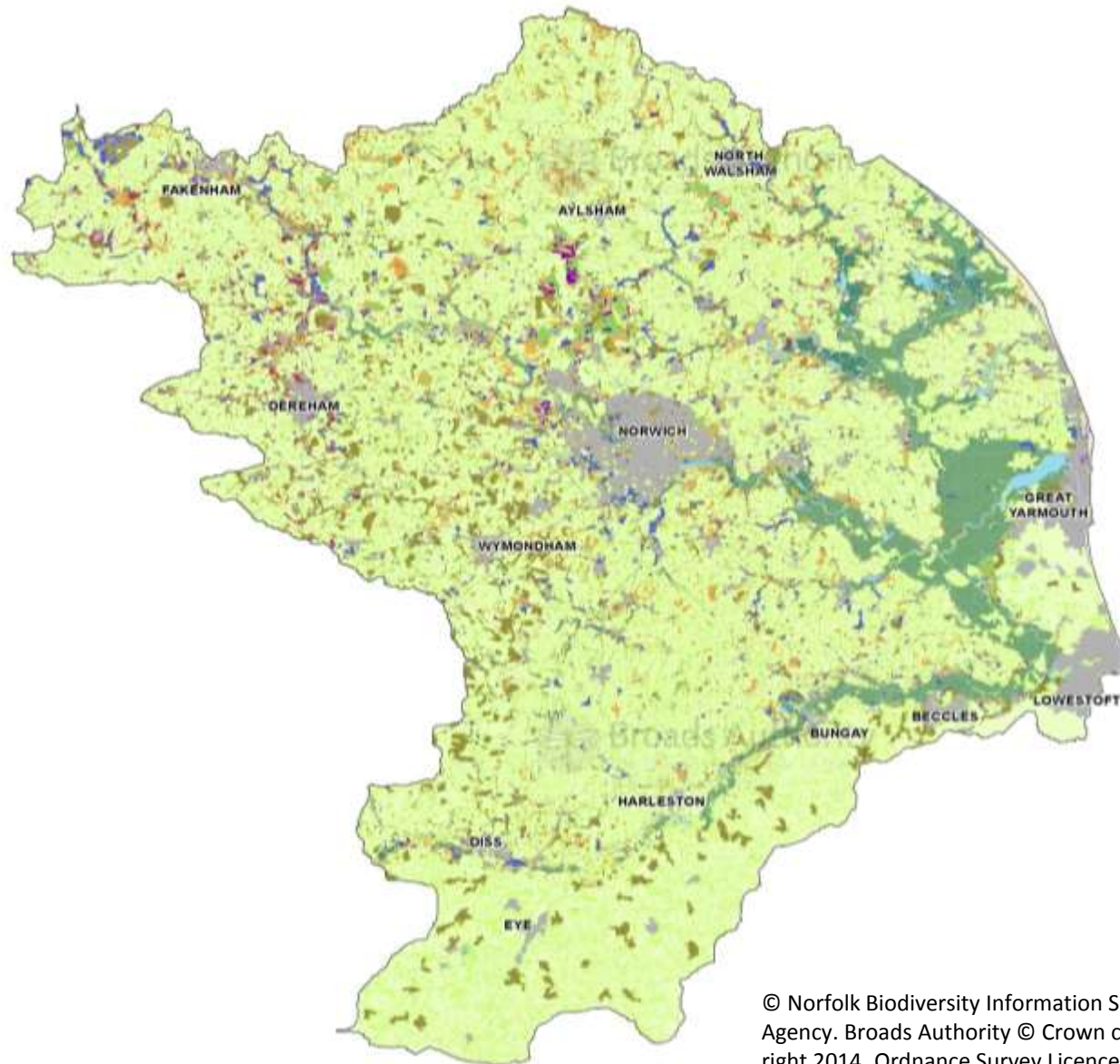






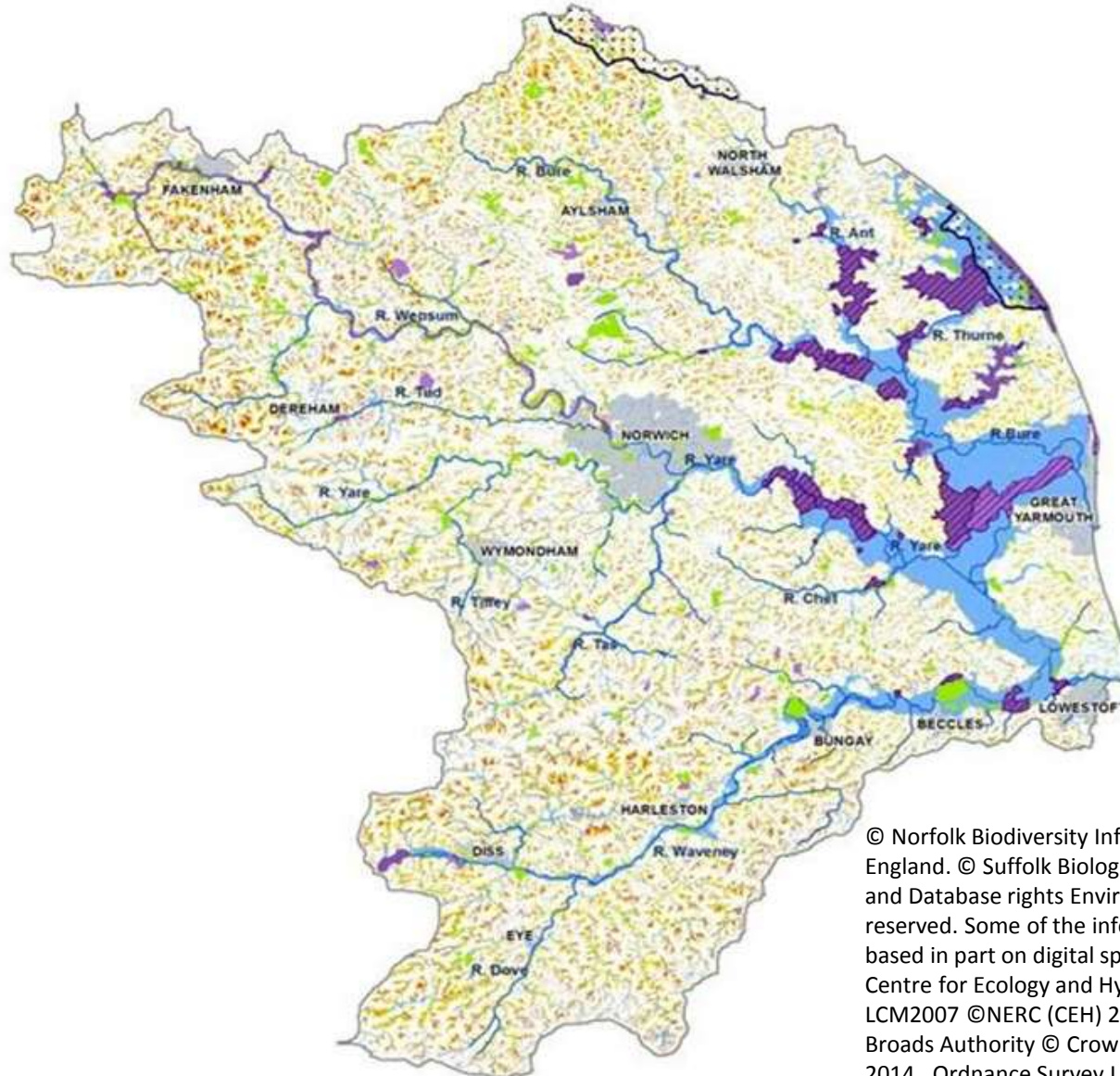
**Broads**  
Authority

# Upstream – Land use





# Run-off risk, flood risk & wildlife designations



© Norfolk Biodiversity Information Service. © Natural England. © Suffolk Biological Records Centre. Copyright © and Database rights Environment Agency 2014. All rights reserved. Some of the information within the Flood Map is based in part on digital spatial data licensed from the Centre for Ecology and Hydrology © NERC. Based upon LCM2007 © NERC (CEH) 2011 © Crown copyright 2007. Broads Authority © Crown copyright and database right 2014. Ordnance Survey Licence number 100021573.

# Water Quality

## Ecological Status (WFD 2012)



### WFD status lakes

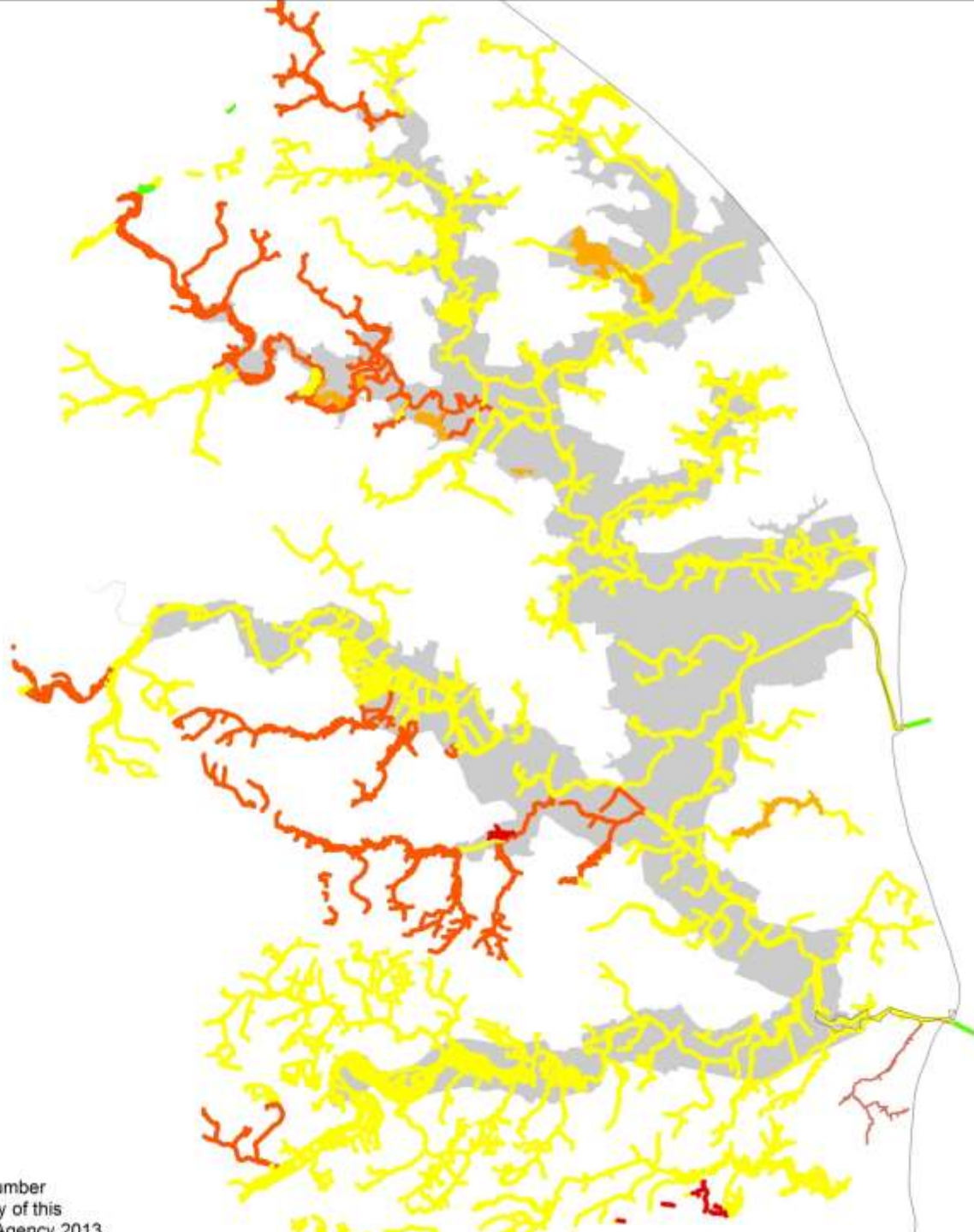
Good	1
Moderate	13
Poor	7
Bad	1

### Lakes without WFD status

Favourable or recovering	11
Unfavourable	7

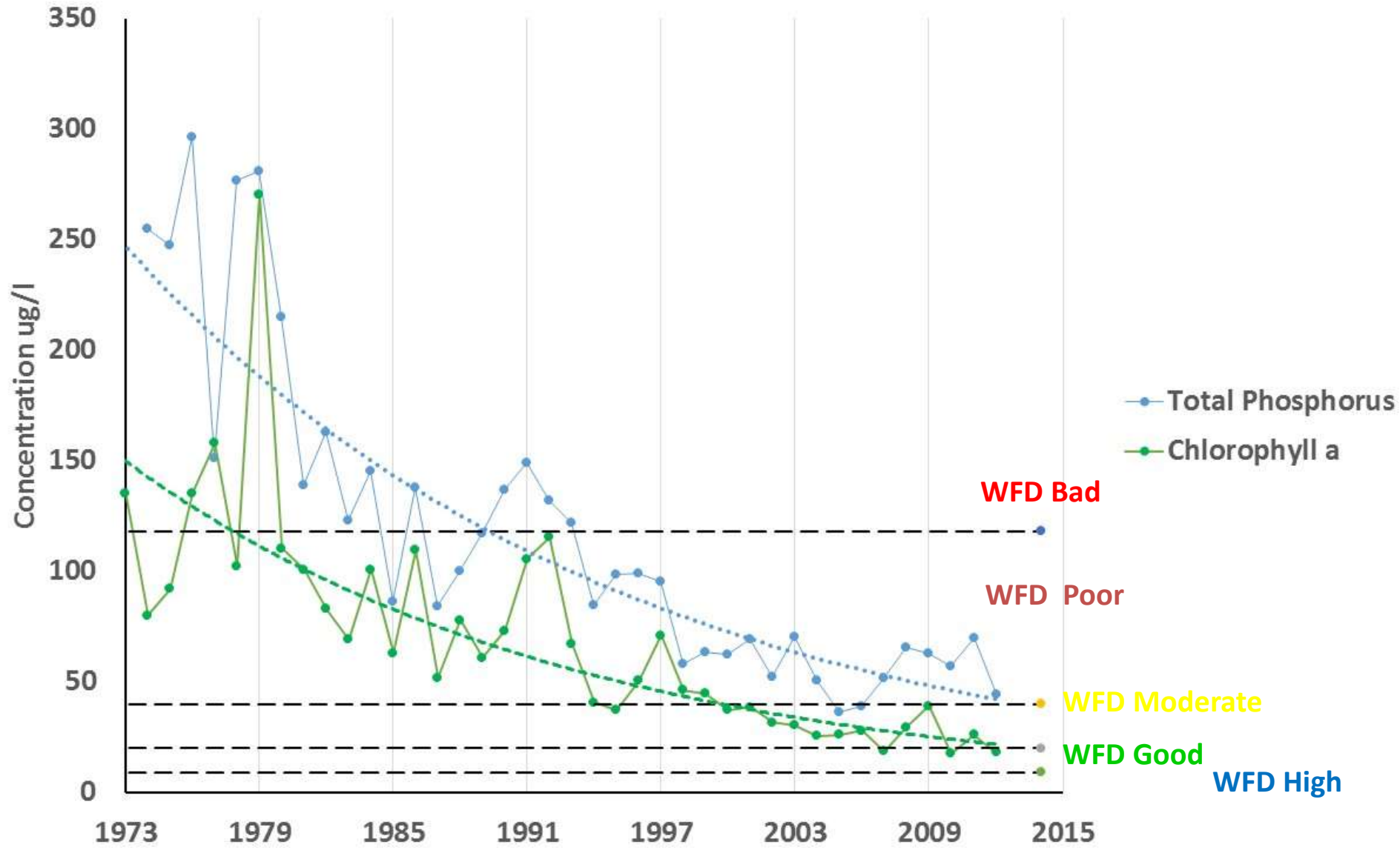
### Non-SSSI lakes

Good	2
Moderate	8
Poor	16

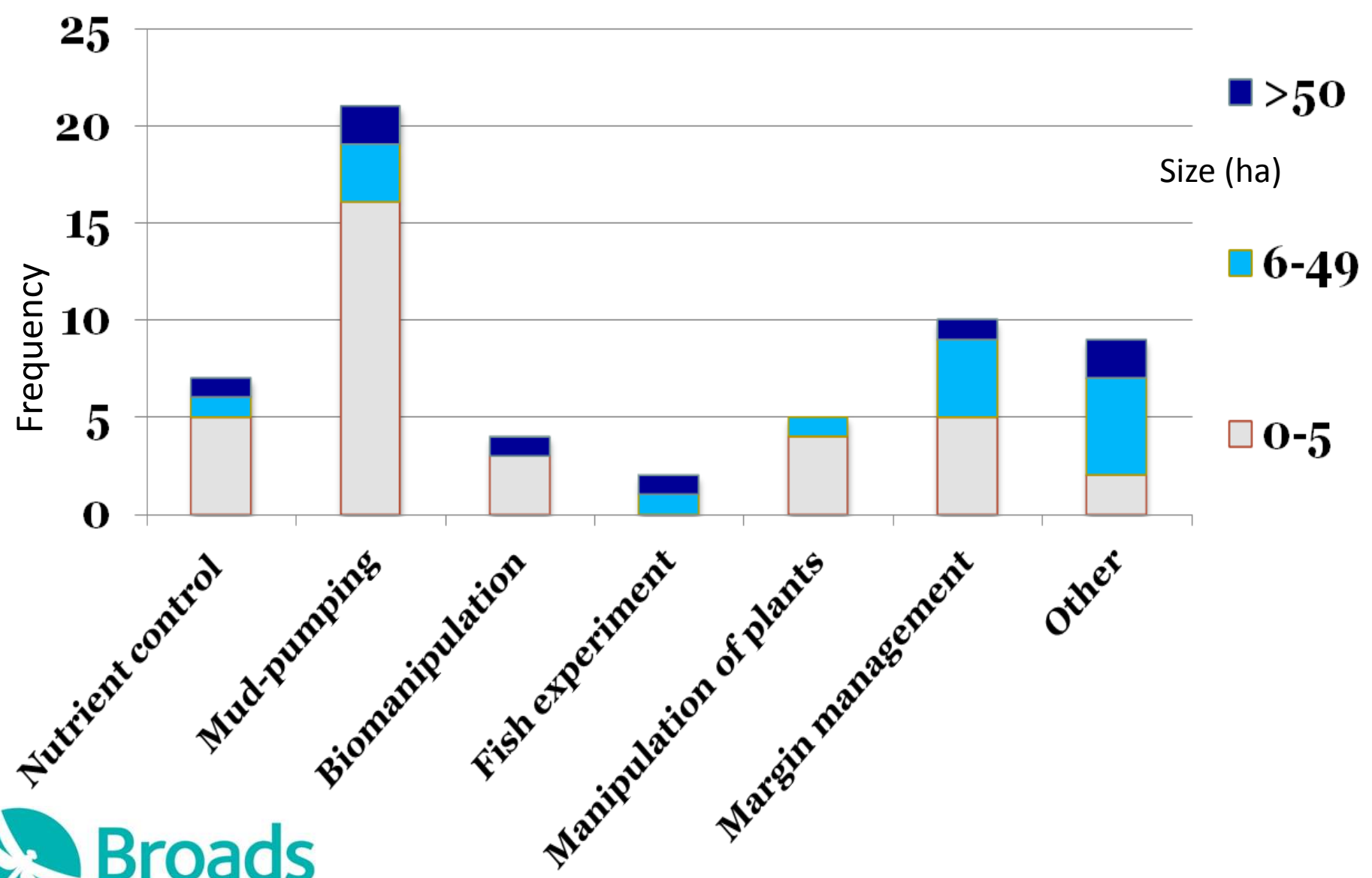




## Recovery of Barton Broad

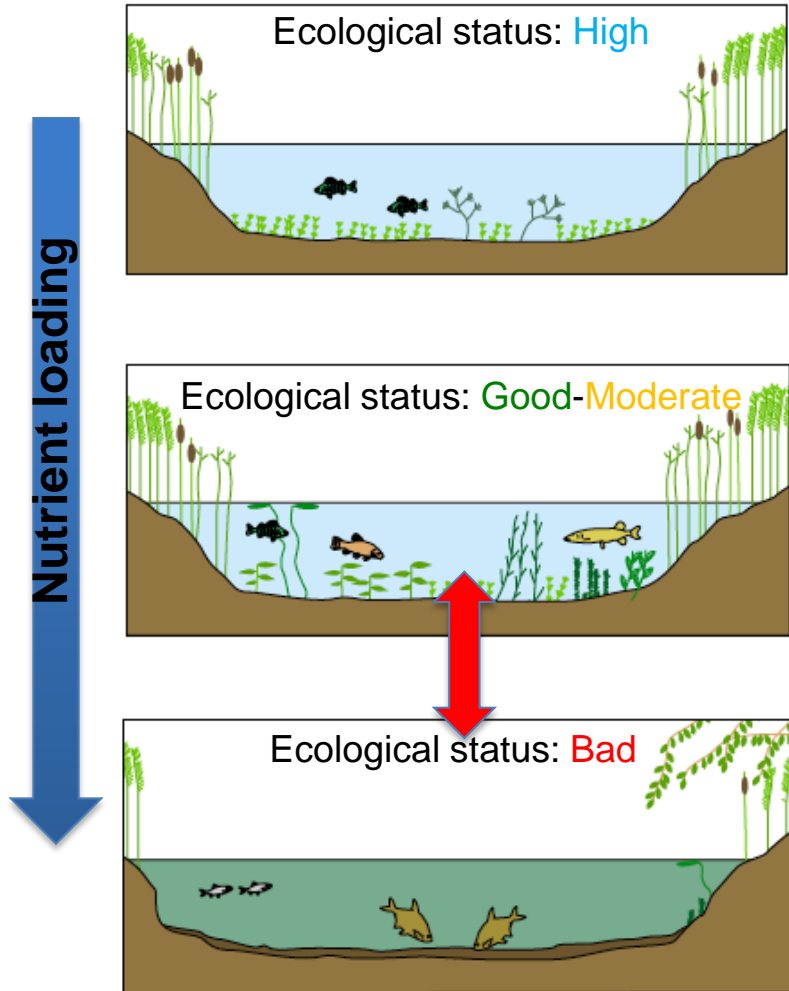


65 named broads – 36 (55%) subject to some form of management





# Shallow lakes and eutrophication



**Phase 1** - low nutrients, clear water, carpets of stoneworts and other pondweeds, mixed fish population (planktivorous and piscivorous species).

**Phase 2** – moderate nutrient enrichment, clear water, mix of abundant submerged and floating vegetation, mixed fish population (planktivorous and piscivorous species).

**Phase 3** - high nutrients, turbid water, few or no aquatic plants, dense algal blooms, mainly small roach and bream (planktivores)















Broadland Rivers C

## Broadland Rivers C

A strategic plan connecting local communities and businesses with the management of the Broadland Rivers



## A review of lake restoration practices and their performance in the Broads National Park 1980-2013

2015



ment activity in the Broads







**Hoveton  
Great  
Broad**

**£4 million  
(LIFE & HLF)**

**NATURAL  
ENGLAND**







Lake enhancement

Water community

Marketing fen biomass

Hickling  
Broad

**£1 million**  
part of submitted Interreg  
**'CANAPE'**

Creating a New Approach to Peatland Ecosystems









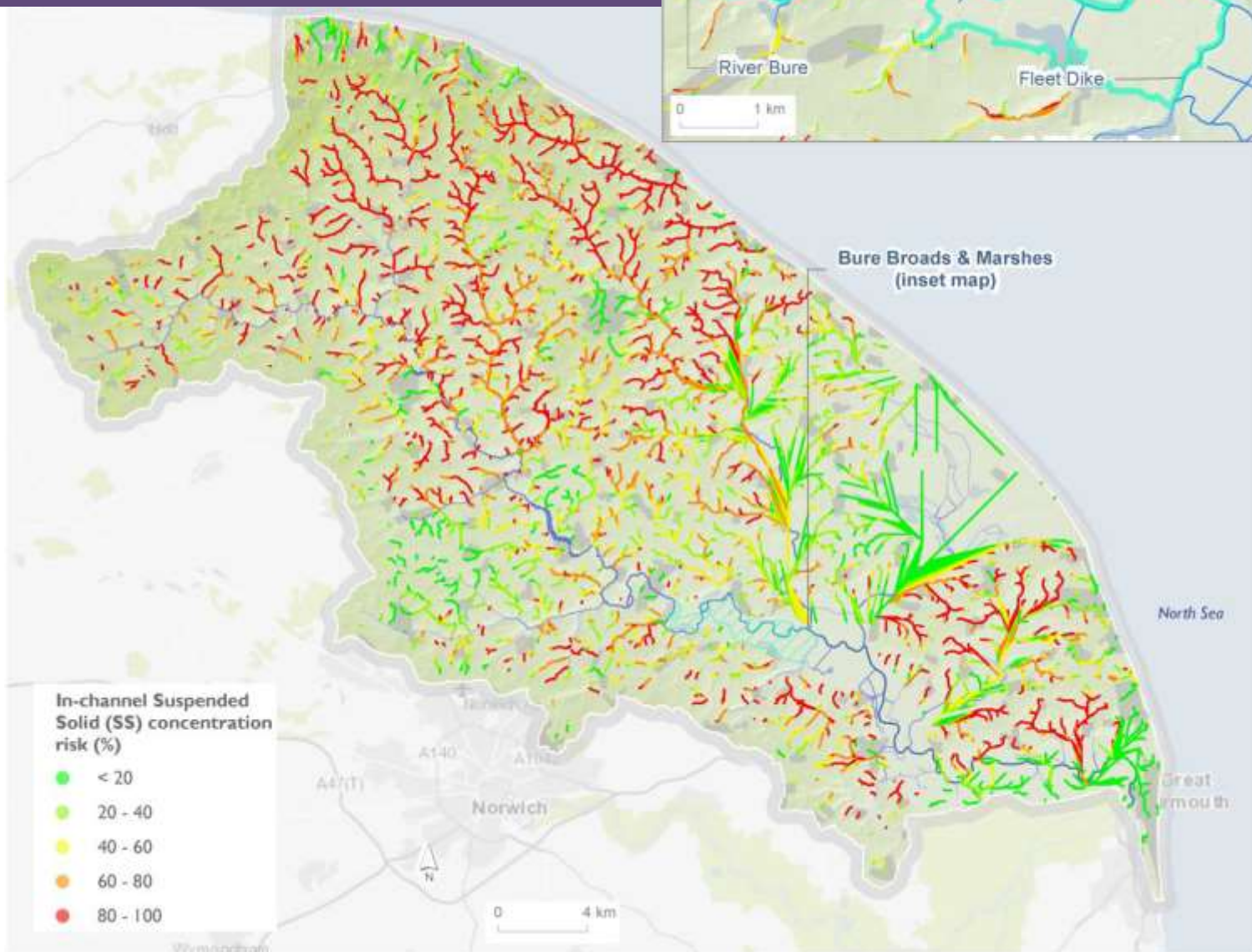
# Broadland Catchment Partnership



**Co-hosted by Norfolk Rivers Trust &  
Broads Authority since 2012**

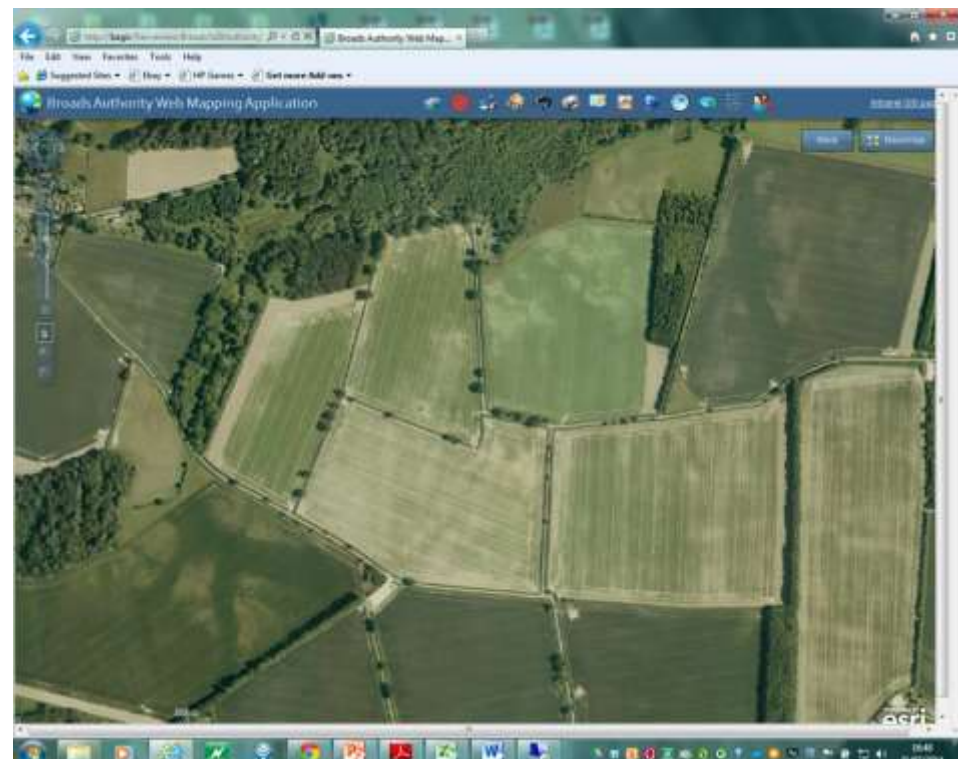
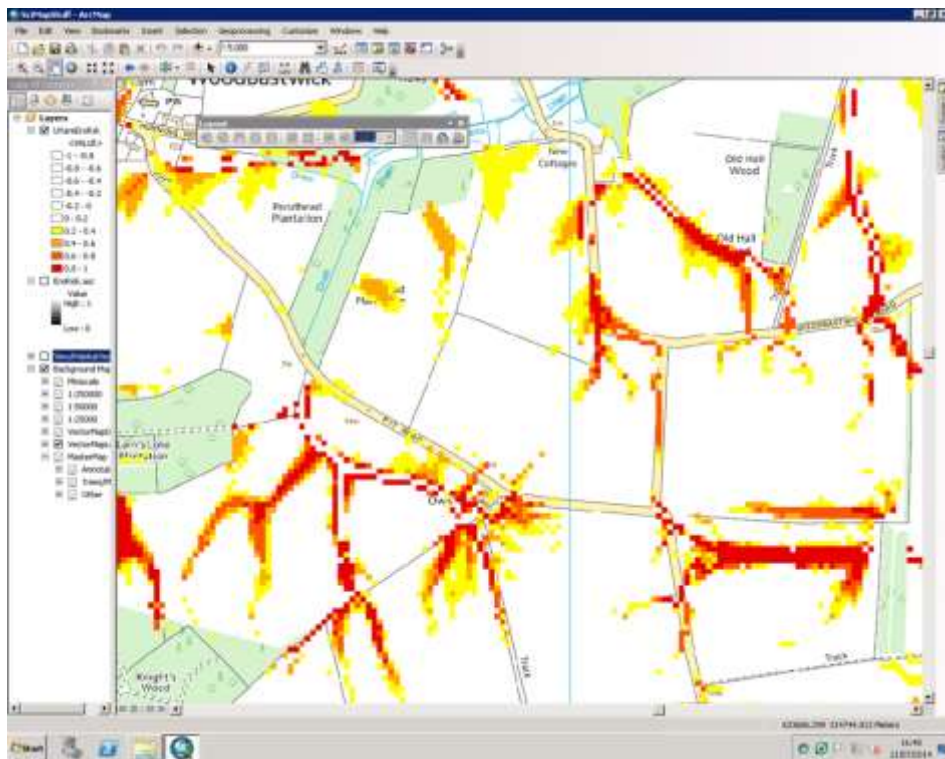
© Crown copyright and database right 2013. Ordnance Survey  
Licence number 100021573. Broads Authority. Copyright ©  
and Database rights Environment Agency 2010. All rights  
reserved. Some of the information within the Sealed Main Rivers  
is based in part on digital spatial data licensed from Ordnance Survey.

# High suspended solids risk





# High run-off risk areas



# Broadland 'Slow the Flow' project

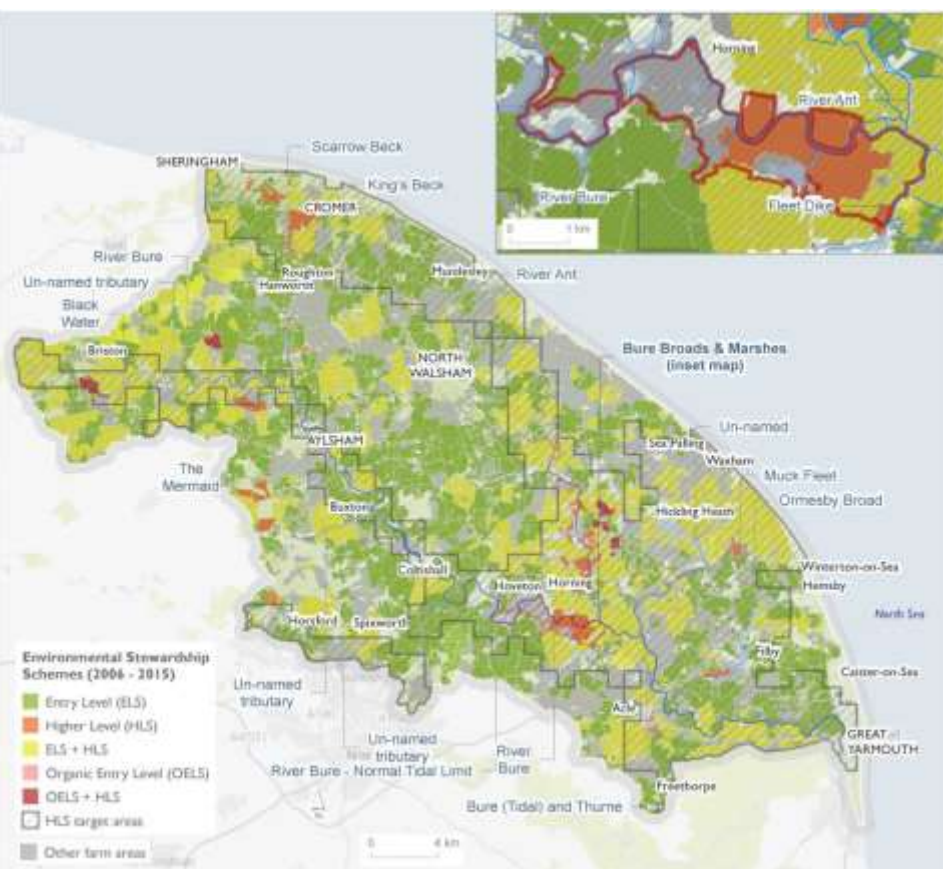
Broadland  
Catchment  
Partnership



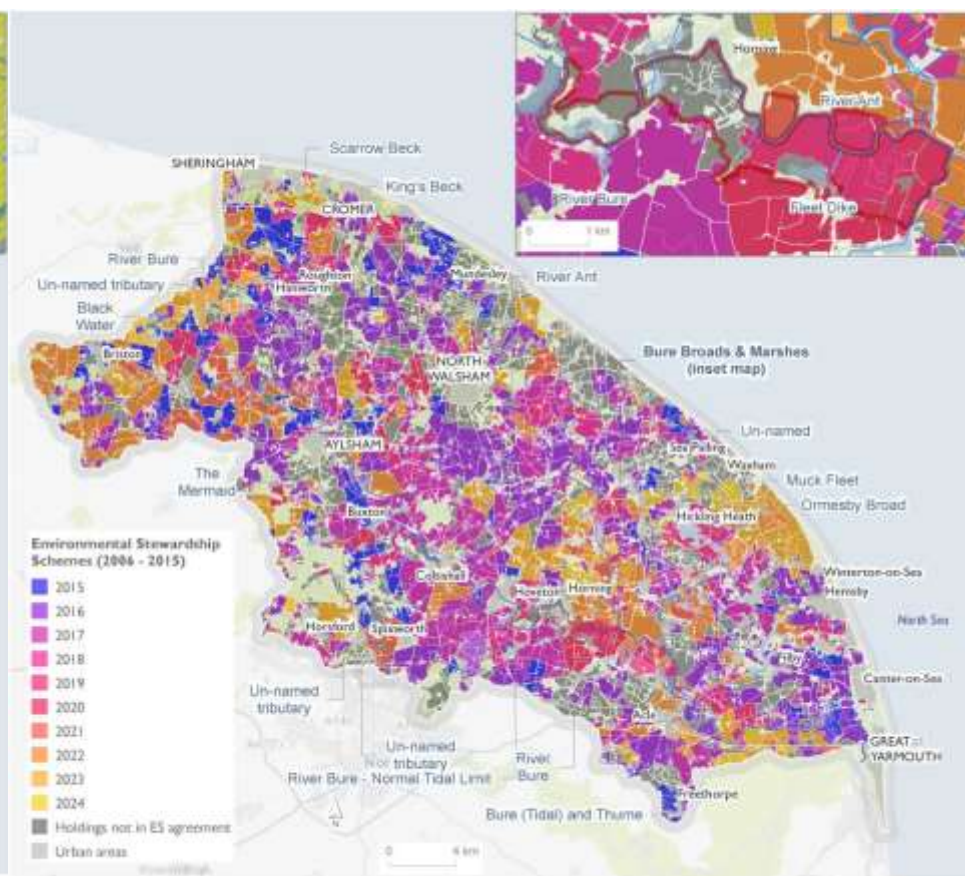


# Environmental Stewardship

## Schemes



## End dates





WORKING WITH  
COMMUNITIES,  
BUSINESS AND  
GOVERNMENT FOR  
HEALTHY RIVERS



# EU WaterLIFE/WWF-UK & Coca-Cola Freshwater Partnership

– delivery of water stewardship demonstration catchments in Broadland & CamEO



Broadland  
Catchment  
Partnership







WORKING  
TOGETHER  
TO CONSERVE  
AND PROTECT  
ENGLISH  
RIVERS

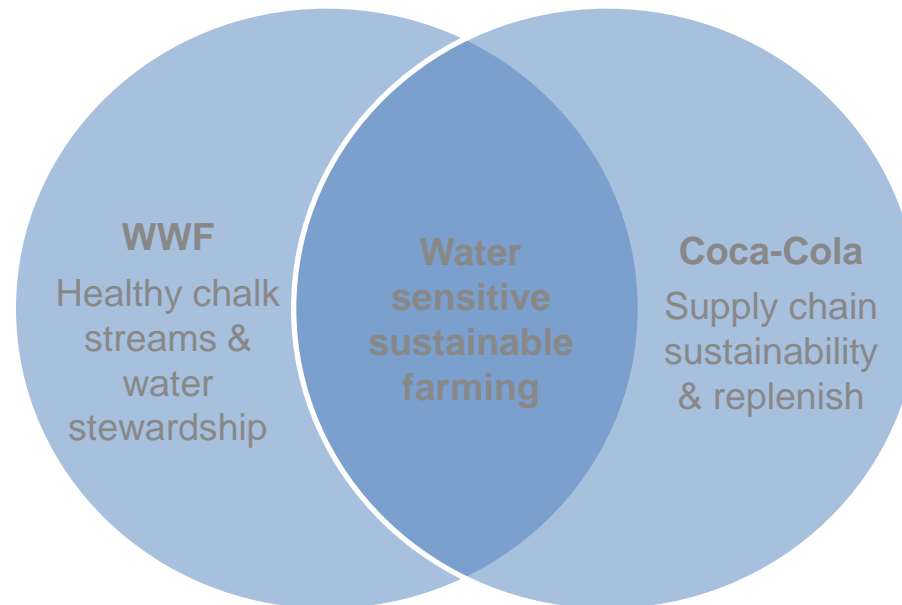
*Coca-Cola* Great  
Britain

*Coca-Cola Enterprises*



## WWF UK and Coca-Cola Freshwater Partnership

- Promote water sensitive farming which continues to move chalkstreams to good ecological health, aids supply chain sustainability and delivers replenish
- Demonstrate and encourage **collective action**



# Farming achievements



**Farmers Weekly Farmer of the Year 2014**  
**Poul Hovesen**



Picture: Farmers Weekly



# Thanks to our Partners

Aerial photos by Mike Page

