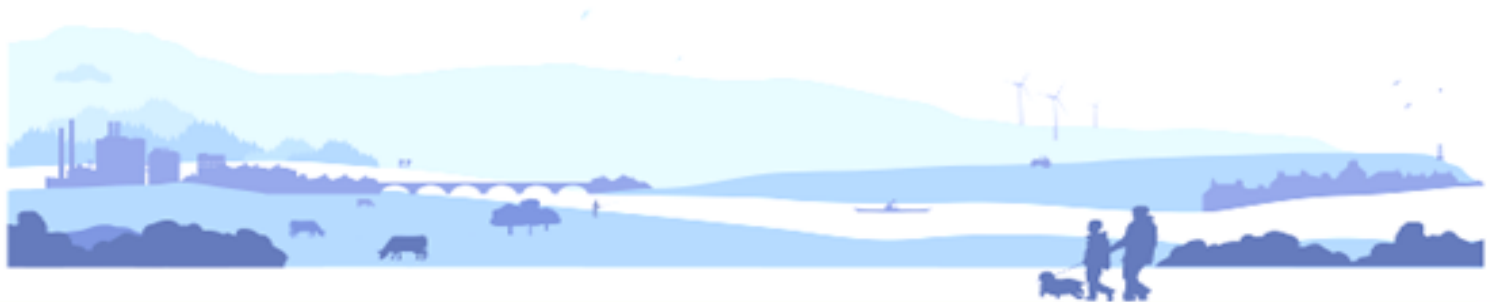


# Water Environment Fund



# Why are we doing it?

- Water Framework Directive. Requires 98% of our water bodies to be at good status by 2027
- Allows us to proactively tackle those pressures where there is no other method to achieve improvements
- Morphological conditions that are preventing our rivers reaching good status are a key element of the river basin management plan



**Urban restoration**  
(multiple benefits)

# Rural restoration (delivering NFM)

## Fish passage (non-active, non-LA)

## INNS control (capped)

## Compensation (for income foregone)

## To qualify, projects should:

- Restore *historic* pressures
- **Work towards WFD objectives**
  - Be on a river downgraded for morphology or fish passage
  - Restore the conditions (i.e. processes) that create habitats
- Fit with the catchment character and issues
- Have match funding
- Lead to other benefits where possible

# General goals of projects





# Size

## Project Status

### Completed

- ▲ Fish Barrier
- Morphology

### Current

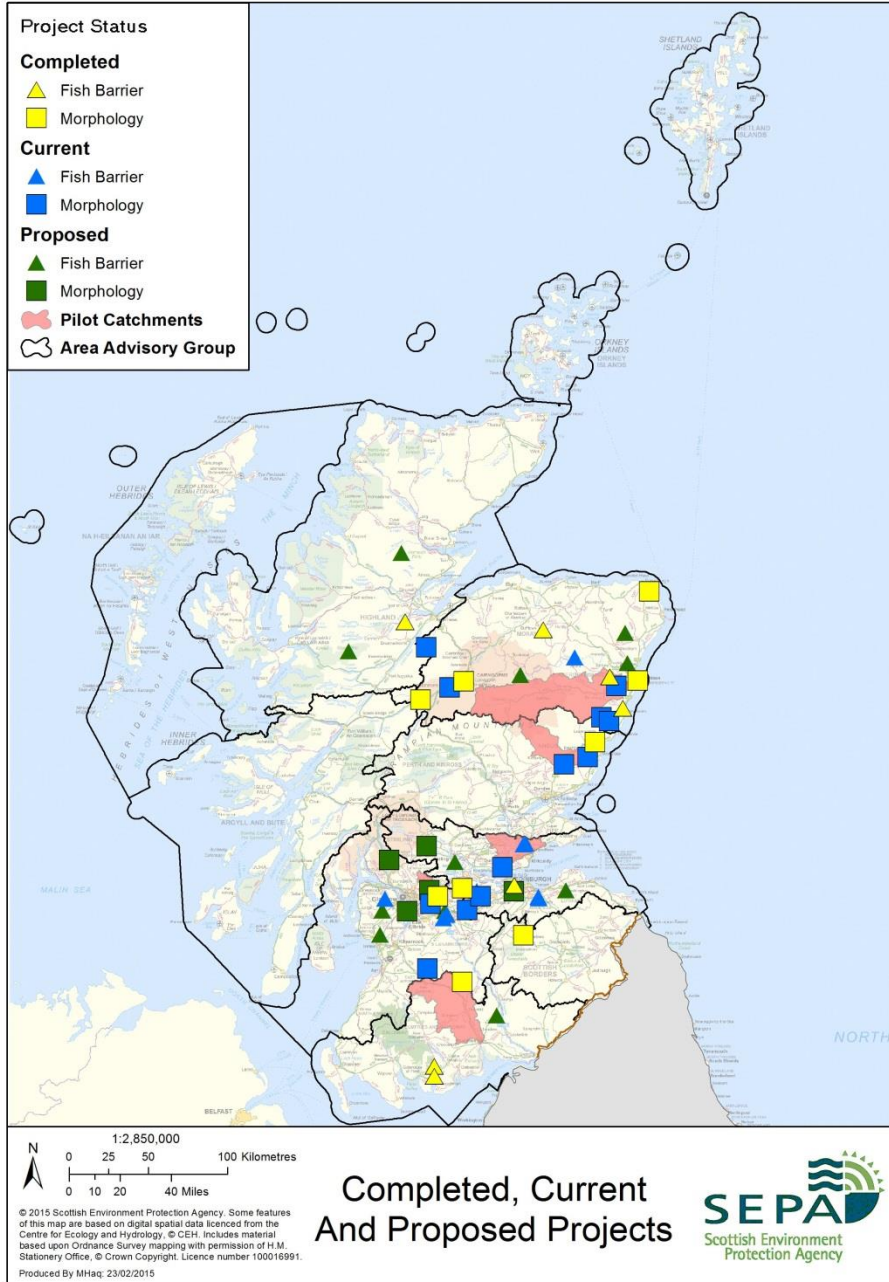
- ▲ Fish Barrier
- Morphology

### Proposed

- ▲ Fish Barrier
- Morphology

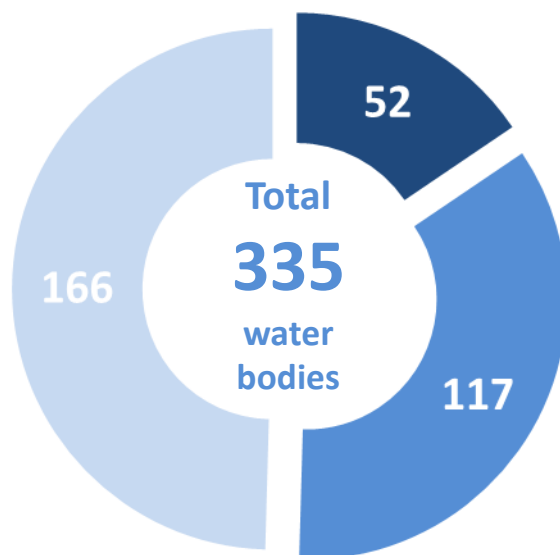
### Pilot Catchments

- 🐟 Area Advisory Group



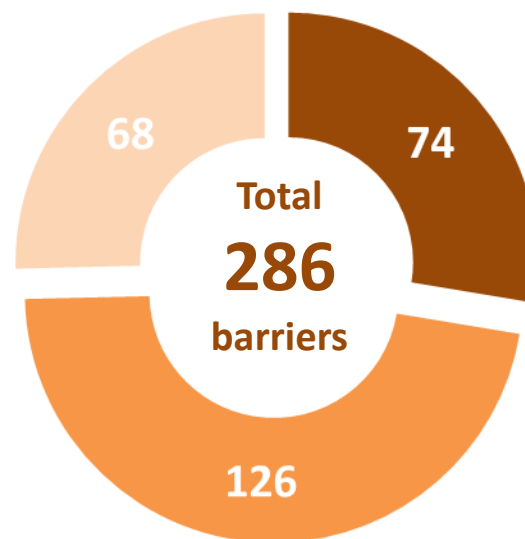
# Size of the task

Water bodies failing for morphology  
that would be addressed under the  
Step Change 1 scenario



- Improved in Cycle 1 (2021)
- Improved in Cycle 2 (2027)
- Potential less stringent /  
Work not started by 2027

Barriers to fish migration that  
would be addressed under the  
Step Change 1 scenario



- Improved in Cycle 1 (2021)
- Improved in Cycle 2 (2027)
- Work not started by 2027

# The Context

- Over half of Scotland's Population lives in Urban areas.
- 2/3<sup>rd</sup> of our national economy comes from cities/city regions.
- Greater focus on urban areas worldwide, European and National level.
- Scottish Economic Strategy
- Scottish Cities Alliance
- Strategic Framework

## Scottish Government Urban/Rural Classification

### 6 Fold Class

- Large Urban Area
- Other Urban Area
- Accessible Small Town
- Remote Small Town
- Accessible Rural (with population)
- Remote Rural (without population)



**EU**  
**2016**

**SCOTLAND'S**  
**AGENDA**  
**FOR CITIES**

Note:  
Accessible  
that are within  
10,000 or  
drive time

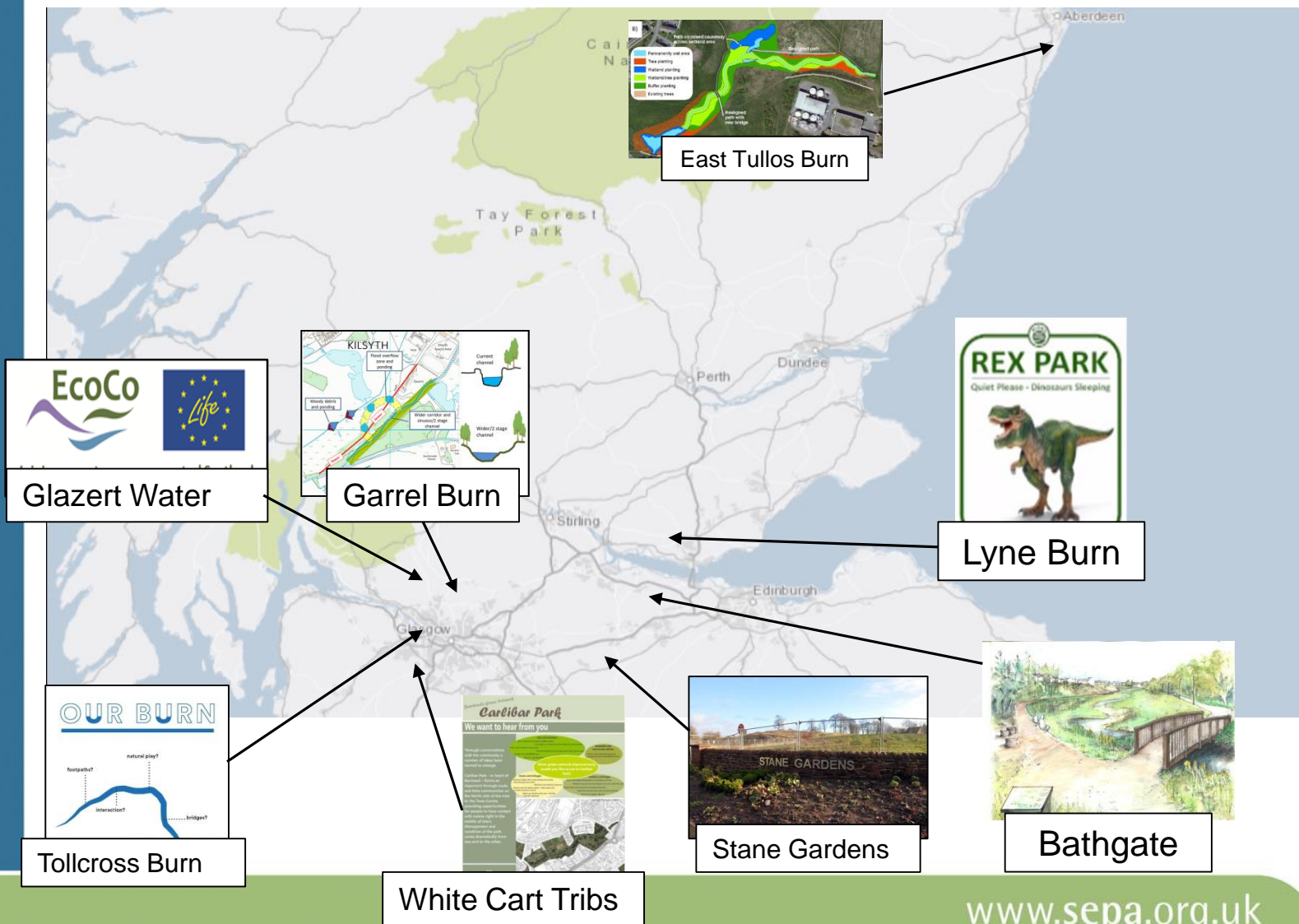
© Crown copyright 2014. All rights reserved Scottish Government. Ordnance Survey Licence number 100024655

Scottish Government GI Science & Analysis Team, October 2014, Job 5547aj





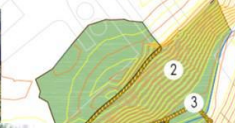
# Urban Projects





# Stane Gardens



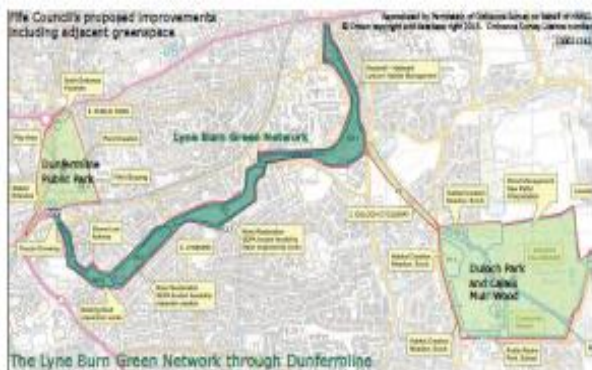




Lyne Burn Corridor



SE



Access links through Dunfermline



Flooding & drainage function



Greenspace & amenity



Habitat improvement



Cycleway improvements



Firt

















- Existing trees
- Proposed trees  
Raleto Rite Park - Trees & Hedging
- Proposed secondary planting  
Raleto Rite Park - Trees & Hedging
- Proposed therapeutic signage at all entrances  
Raleto Rite Park - Entrance

- |   |  |
|---|--|
|  | Existing amenity & long grass to be retained as long grass       |
|  | Existing amenity grass   |
|  | Proposed mowed long grass  |
|  | Proposed to Ret Park - Amenity, Long grass & Wildflower planting |
|  | Proposed wildflower mowed meadow                                 |
|  | Proposed to Ret Park - Amenity, Long grass & Wildflower planting |
|  | Proposed amenity grass   |
|  | Proposed to Ret Park - Amenity, Long grass & Wildflower planting |

[illegible]

# Lyne Burn Corridor



"We Need volunteers!"

"We want to create a park  
no one wants to throw  
litter or fly-tip in, a cared  
for and attractive place."

© Edinburgh & Lothians Greenspace Trust



